

TRUSS  
ROOF SYSTEM

9'-0" BASEMENT

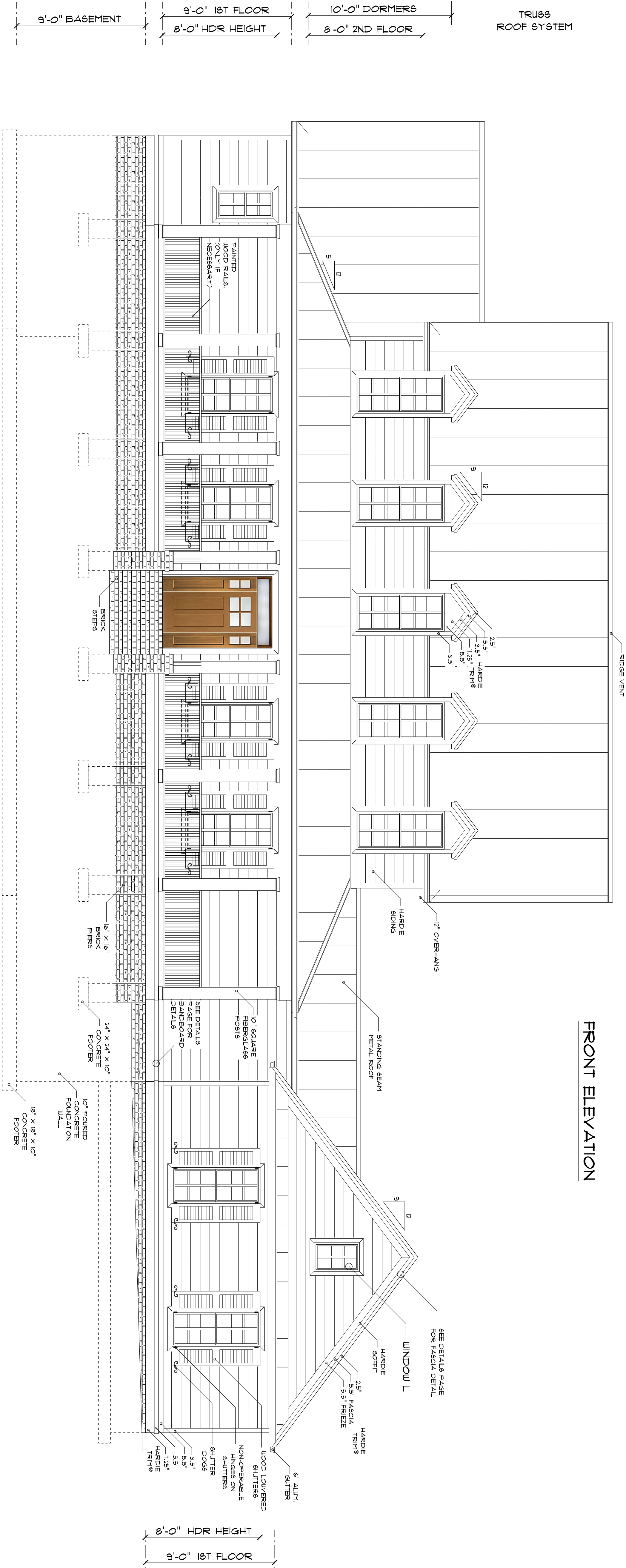
9'-0" 1ST FLOOR

8'-0" HDR HEIGHT

10'-0" DORMERS

8'-0" 2ND FLOOR

**FRONT ELEVATION**



RIDGE VENT

2.5"  
5.5"  
3.5"  
1.25" TRIM  
5.5"  
3.5"

HARDIE  
TRIM

12" OVERHANG

HARDIE  
SIDING

STANDING SEAM  
METAL ROOF

SEE DETAILS PAGE  
FOR FASCIA DETAIL

WINDOW L

HARDIE  
SOFFIT

2.5"  
5.5"  
5.5" FASCIA  
TRIM  
5.5" FRIEZE

HARDIE  
TRIM

6" ALUM.  
GUTTER

WOOD LOUVERED  
SHUTTERS

NON-OPERABLE  
HINGES ON  
SHUTTERS

SHUTTER  
DOGS

3.5"  
5.5"  
3.5"  
1.25"  
HARDIE  
TRIM

HARDIE  
TRIM

8'-0" HDR HEIGHT

9'-0" 1ST FLOOR

PAINTED  
WOOD RAILS  
(ONLY IF  
NECESSARY)

BRICK  
STEPS

16" X 16"  
BRICK  
PIERS

24" X 24" X 10"  
CONCRETE  
FOOTER

10" Poured  
CONCRETE  
FOUNDATION  
WALL

18" X 18" X 10"  
CONCRETE  
FOOTER

SEE DETAILS  
PAGE FOR  
BANDBOARD  
DETAILS

10' SQUARE  
FIBERGLASS  
POSTS